

# Impact of Street's Physical Elements on Walkability: a Case of Mawlawi Street in Sulaymaniyah, Iraq

## Abstract

The objective of this study was to critically assess the walkability level in terms of physical elements of Mawlawi Street a commercial and famous street located in the city center of Sulaymaniyah, Iraq. Both qualitative research based on interview with locals and direct observation and quantitative research via questionnaire with pedestrians were conducted in this study. Firstly, site observation was carried out through PEDS (Pedestrian Environment Data Scan) audit tool and taking photographs in order to observe the streetscape features. In this regards, four criteria as environment, pedestrian facility, road attributes, walking environment, and subjective assessment were considered as well. It served the purpose to give a broad direction about streetscape features. The study showed that inadequate and poor quality of street's physical elements changed the street to an unsafe and uncomfortable environment for walking with weak and low level of street connectivity and accessibility for pedestrians.

**Keywords:** Physical elements; Walkability; Mawlawi Street; Sulaymaniyah; PEDS Audit tool.

## 1. Introduction

Walking is a part of most people's everyday routine. It is the simplest mode of transportation, which is free, convenient, requires no equipment, and is encouraged as part of a healthy lifestyle (Forsyth et al., 2008). It is an attractive mode of transport for experiencing an adjacent environment and interacting with society, which is not possible by transport modes (Wey and Chiu, 2013). Walking is also combined with other forms of transportation. Going from your car to your destination involves walking; accessing the nearest bus stop or train station, involves walking (Lo, 2009). However, the way which environment is able to support and encourage walking is called walkability.

Walkability has effect on health, environmental, and economic benefits. According to Wey and Chiu (2013), traffic congestion, environmental pollutions is emerging problems in many areas. Therefore, it was found that walking as a means of transport has positive implications towards solving those problems. However, the walking environment has continued to be ignored, even more, and until recently, relatively not enough research has been done on walking behavior in the relation to the walking environment. While, suitable street design can considerably enhance the quality and quantity of the walking environment. It is not only limited to the urban design qualities that may promote walking, but also the psychological aspect, such as the pleasure and enjoyment while walking. Physical elements are known as the principal components of street that their quality can extremely influence walking status in the streets. This paper takes Mawlawi Street, located in the city center of Sulaymaniyah within Iraq as a case study to assess in details the walkability level in terms of physical elements in this historic street.

## 2. Background study

### 2.1. Definition of Walkability

Walkability should be considered as it converge the different elements of urban design, namely, the structure, context, time, distance for users to make sense of the city. It is an evaluation of having knowledge about the reliability of an area for walking. Thus, Walkability is often described as a measure of how friendly an area is for pedestrians and typically accounts for the overall quality of walking conditions (Litman, 2003). Research done on walkability in the past have mainly focused on macro-scale variables such as population density and mix land use and socioeconomic conditions of an area; nevertheless, an increasing body of research suggests that the built environment as well has a remarkable effect on walkability and the quality of the pedestrian environment (Saelens and Handy, 2008). The walkability level can be influenced by the qualities associated with walkable environment; these include accessibility, environmental and social safety, aesthetically pleasing man-made and natural features, pedestrian amenities for comfort, and land use diversity (Brown et al., 2007). Besides, quality of

footpaths, sidewalks or other pedestrian right-of-ways, and also traffic and road conditions are significant factors in assessing the walkability level (Gehl, 2010) . Finally, a walkable environment should be legible in order to provide a sense of orientation and visual comfort (Southworth, 2005).

## **2.2 Street as a walkable environment**

Buildings, open spaces, streets and paths are significant urban elements in an urban district. The legibility and connectivity of these elements support, ease of movement and accessibility of the pedestrians (Wall and Waterman, 2010). In addition to simply accommodating pedestrian movement, streets and sidewalks are the most prominent public spaces in a city (Jacobs, 1961, p.29). The word "street", according to Kostof (1992) description, is an entity made up of a road way, usually a pedestrian way and flanking building. Street as an institution is an equally critical subject beyond its architectural identity, because every street has an economic function and social significance (Rykwert, 1986). Streets not only facilitate automobile movement, but also provide an environment for pedestrians that is inviting, safe, aesthetically pleasing, and accessible, as well as equipped with sufficient pedestrian amenities (Litman, 2003). The elements of a street along with the overall image of the streetscape contribute to the quality of the walking environment. In order to rebalance the functionality of street networks, individual streets need to be planned and designed with all users in mind. The complete streets movement takes a holistic approach to street design in an effort to produce streets that are safe, convenient, and inviting for drivers; bicyclists; public transit users; and pedestrians of all ages and abilities (LaPlante and McCann, 2008). Meanwhile, Sidewalks and walkways are considered key components of pedestrian-friendly streets and should allow pedestrians to experience safety, accessibility, comfort, and efficient mobility when walking along them. Sidewalks are meant to be for pedestrian use. However, pedestrians must share this space with a long list of obstacles and street hardware, much of which is required for traffic control matters (Fruin, 1971).

## **2.3 Principles regarding walkable street**

Past reviews and newer studies often identify that several built environment characteristics have significant relationships with walking activity. These criteria are called the design criteria or characteristics of the built environment in walkable communities. They can be grouped as:

**Connectivity:** A connected street is a physical and physiological network that offers multiple routing options for a diverse range of activities, resources, services and places, encouraging physical activity (Jackson, 2009). Connectivity comprehensively refers to more direct routes and hence shorter distances from a place to the intended destinations (Saelens and Handy, 2008). Connectivity also describes continuity, which occurs by proximity and linkage with other modes of transportation. The city can be connected very well by continuous sidewalks without gaps and short block. Also the street can connect by public transportation to surrounds (Jackson, 2009). So, a contracted street is more pedestrian-friendly (Southworth and Ben-Joseph, 2003). **Safety:** is considered important within the pedestrian network, for individuals of different ages and degree of mobility from both dangers of the traffic and crime. Pedestrian safety may emerge as the best implied, and most fully developed feature of walkability (Southworth, 2005). Walking trips are enhanced by safer places. people who can identify the convenient and safe places

have a high tendency to walk up to 41.5% more than the people who are not aware of such places, who may only walk up to about 27.4% (Powell et al. 2003). **Accessibility:** An accessible place is capable of being used by people of all ages and mobility levels. Universal access should be addressed in the design of all transportation modes, public spaces and connections (Jacobs, 1993). Pedestrians in such environment, consider getting to their destinations or transit nodes easier and quicker and people place demands on better quality walkways as well. Some of the features of this level of walking include compact land use, wider paths, rub-cut ramps, tactile strips, and on-slip tiles. Proximity to potential destinations related issues are a major discourse in the most studies done on accessibility. Five reviews show adequate evidence to deduce that more walking can be achieved with accessibility based on distance to destinations (Handy et al., 2002). **Comfort:** Walking should not be a burden, in deriving the best walking experience, factors such as comfort, aesthetics of the environment and others has a role to play. In the developed countries, active pursuit is given to characteristics such as streetscapes beautification, landscaping, etc. (Leow, 2008). A comfortable place is an environment where the form and the capacity of streets and public spaces match the pattern of human behaviors, providing a sense of ease and enabling a feeling of personal safety (Jacobs, 1993). **Convenient:** A convenient place is a location with clear image and legibility. The area is easy to understand, providing a sense of being near-at-hand with visual cues and physical directness to a pedestrian's most essential need. Way finding is the organized movement of pedestrians and vehicles through a complex environment using maps, signs, landmarks or icons. A good way finding system helps users experience an environment in a positive way and reassures guests that they are on the correct as (Giles-Corti et al., 2009). **Engaging:** An engaging place is a visually rich aesthetic setting with interrelated parts, providing a sense of contentment and enabling both formal and informal forms of social exchange. Several contributing factors lead to the positive experiences along a street from the treatment of building facades, spacing of trees, lighting, quality of benches, cafe space on wide sidewalks and even trash bins all add to the experience along the street (Giles-Corti et al., 2009). **Vibrant:** A vibrant place is an area pulsating with life, vigor and activity. Many of these attractions are referenced in the implementation framework along with recommendations on how to support and enhance the holistic pedestrian experience along the routes to each destination (Giles-Corti et al., 2009). Therefore, principles related to walkable street can be classified in many ways with all attempts used in describing the same characteristics. To promote walking, more factors are needed to be considered. This study focused on comfort, safety, accessibility, and connectivity as the major factors.

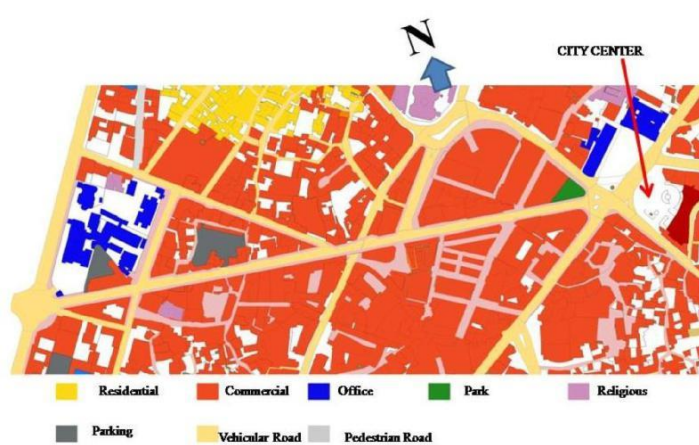
#### **2.4 physical elements that influence quality of pedestrian environment**

The qualities of the built environment, thought to have an effect on walkability, include the physical features (road width, sidewalk width, street furniture, urban amenities) and the intangible characteristics (human scale, degree of enclosure, level of cleanliness, transparency) (Saelens and Handy, 2008). For the rest of the paper, physical elements of built environment were considered. These elements work to provide a conducive environment for pedestrian travel at both street and site level. Such well-structured designs, based on the elements, make it easy for pedestrians to opt for walking based on their build environment perception (Frank et al., 2003). The primary stage in defining walkability is to resolve what physical properties to test and calculate. Design elements that ensure safety from traffic, at the level of the street, are paramount to a walkable environment (Jacobs, 1993, Brown et al., 2007). In the list are marked pedestrian crossings, curb extensions (chokers), Curb cuts or curb ramps, pedestrian refuge islands, medians, and raised crosswalks, traffic signals, speed bumps all of which provide a protective measure for the pedestrians to calm traffic and visibility to drivers (Giles-Corti et al., 2009, Daisa, 2010). Bicycle lanes and on-street parking can also serve as a demarcation between automobile traffic and pedestrians (Jacobs, 1993, Daisa, 2010). Way finding signs, pedestrian signals, flashing warning lights, overpasses/underpasses, and pedestrian crossing warning lights are intended to ease pedestrian movement, some actually end up benefiting vehicles (Whyte, 2012). Sufficient lighting should be made available for the safety of both pedestrian facilities and vehicle traffic safety. Continuous pedestrian network (crosswalk) located at the intersections for greater safety for pedestrians (Daisa, 2010). The pavement of the road should slope up with a gradual inclination to meet the sidewalk's elevation so as to

prompt vehicular traffic to slow down. A wider Sidewalk create a comfortable and inviting walking environment accommodates more pedestrians of varying speeds without colliding with each other, and café seating or other suitable building-related functions give more life to the pedestrian environment (McNally, 2010). Landscaping and street trees can serve as barriers between fast moving traffic and pedestrians, and can as well stimulate visual enjoyment and protective measures, thereby making walking a pleasing experience (Jacobs, 1993, Giles-Corti et al., 2009). Elements like kiosks, benches, public garbage and signs, which are pedestrian scale, can give the pedestrians some orientation and provide an attractive, leisurely, enjoyable walking experience (Jacobs, 1993). The pedestrian facility material must not accommodate any form of obstructions and physical interruptions. Smaller Building width and transparent facade helps to create more variety of uses as well as activities. Monotony a long block can be broken up by a variety of building types and materials, and helps give visual interest for the pedestrian (Daisa, 2010). Public transportation and bus stops and shelter have great impacts on the pedestrian environment (Nakazawa, 2011) . Finally, a pedestrian space that provides a variety of above-mentioned amenities located appropriately in an effort to encourage long stay of people is considered successful (Moughtin, 2003).

## 2.5 Mawlawi Street

The rapid economic growth of Iraq after the war in 2003 made the citizens more depend on private cars. It resulted in difficulties and also an unsafe environment for walking. Mawlawi Street is one of the busiest and famous commercial streets located in the city center of Sulaymaniyah in Iraq. It can be considered as the main link that connects the city center and historical area to the public park and Salm Street (Figure 1a). The width of this historic street is 15m and it is almost 1 km long. It is the entrance to the city center and historical district in Sulaymaniyah. There are different types of activities on both sides of the street, including hotels, green groceries, retail shops, restaurants, book shops as well as informal activities such as vendors and hawkers. However, lack of efficient public transportation has made people more dependent on private cars. It resulted in vehicle-pedestrian conflicts in the evenings that caused difficulties and unsafe environment for walking. In addition, after 2003 most of the residential houses around Mawlawi Street were bought by traders who have now demolished the houses and converted them to commercial buildings. Thus, lack of residential function around the street reduced security, especially at night times. More importantly, the unpleasant quality of the built environment in such historical street has made the street inactive at all times of days excluding the evening (Figure 1b). Despite of being the main and busiest commercial path, the street is now uncomfortable for walking, while it affected pedestrians and visitors who do not use the street for walking, fun and pleasure during their free times. Therefore, it is essential to improve the walkability level of such commercial street by focusing mainly on the design and provision of streetscape elements.



**Figure 1.** a) Location of Mawlawi Street, b) Mawlawi street as the busiest commercial street (source: [www.Flickr.Com](http://www.Flickr.Com))

### 3. Method

In order to promote walkability, it is significant to determine those basic physical factors that influence the walkability in the streets. This study employed the mixed-method approach included quantitative and qualitative data. Qualitative survey consisted of direct observation and interview, whereas quantitative data were collected via questionnaire. Firstly, direct observation was applied in collecting the streetscapes information, namely the PEDS audit tool and taking photographs in order to observe the streetscape features that were available on the street segment for appraising the pedestrian environment quality. Four criteria were considered in PEDS audit tools: environment; pedestrian facility; road attributes; walking environment, and subjective assessment as a separate part. These criteria gave the researcher a broad direction in terms of the observation to be made; by being specific about the streetscape features and facilities to consider. Meanwhile, photographs were taken throughout the observation to provide a visually depicted and contextualize the observed streetscape features. For triangulation of data, a 5 point Likert scale questionnaire survey was conducted on pedestrians who come to Mawlawi Street for their needs. In order to know their subjective ideas about the quality of physical elements four basic features were found: safety, comfort, accessibility, and connectivity. Later, the interview was conducted with local people who work in Mawlawi Street to validate the previous findings. They were asked questions about the strength, weakness, opportunity, and threat of the street in terms of walking. Finally the potential proposal was drawn in order to reinforce the physical elements of the street to enhance walkability. Figure 2 depicts the methodological framework of this study.

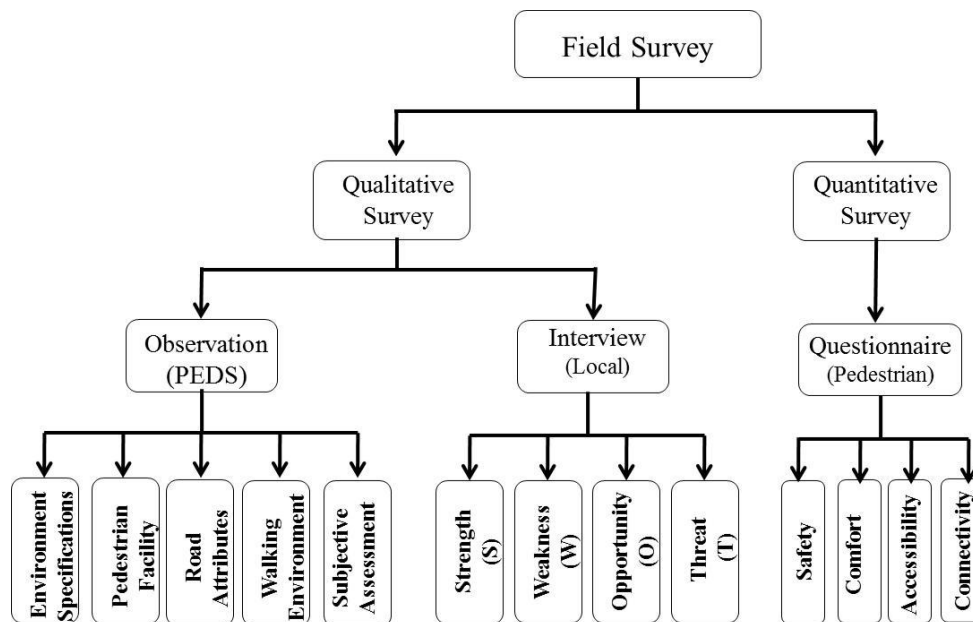


Figure 2. Methodological Framework

## 4. Result and Discussion

### 4.1 Observation

With the rising interest in active living and the bigger concern for the quality of public space, a number of audit instruments have been developed by researchers, which focus on the streetscape environment and measure the physical components or features related to walkability (Active Living Research, 2004). Audit tools are a systematic observational method, which demands a personal data

collected by an observer, within a targeted environment. There is also considerable variation in the level of details measured by each audit tool; some focus only on a couple of features while others are more in depth and include dozens of features that address many different environmental characteristics (Brownson, 2009). This study makes use of PEDS audit tool, The PEDS audit tool is made to be a systematic assessment of the physical environment that appraises streetscape features, presence, and qualities. It hypothesized to influence walkability consist of both sides of one street block (Active Living Research, 2004). With the use of on-site assessments, auditors observe the environment against definite criteria. This audit tool included 36 criteria that focused on different components of a pedestrian environment, which are grouped into four major sections; as “Environment, Pedestrian Facility, Road Attributes, Walking Environment” and subjective assessment. Within each section, there are predominantly close-ended questions (Likert scales and check boxes) with a few open-ended questions to incorporate researcher’s comments. Each criterion is based upon extensive research and literature to reflect environmental features that are considered to be a key attribute of pedestrian environments that affect walkability (Active Living Research, 2004). Section A as “Environment” dealt with streetscapes features that were less tangible but still important to consider when evaluating the quality of the pedestrian environment. Section B came up with “Pedestrian Facility”; type of pedestrian facility depended on the surrounding environment and the activities that would occur along it. Section C included “Road Attributes” as the condition, features, and size of a roadway could have a significant effect on the quality of the pedestrian environment. Section D consisted of “Walking Environment” showed that the elements of a street along with the overall image of the streetscape contribute to the quality of the walking environment. Finally, the subjective ideas of the researcher were wanted in the last segment (Figure 4). As it can be released from the results of this audit tool and photographs which were taken from the site, Mawlawi Street was not attractive and safe for walking (Figure 3).



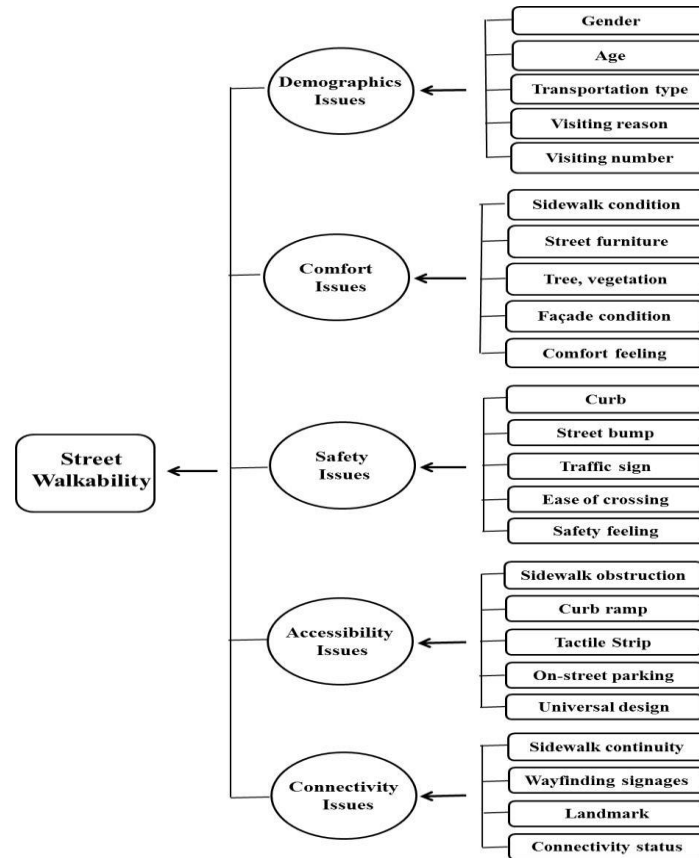
**Figure 3.** a) Pedestrian-vehicle conflict, b) Unsuitable place of informal activities, c) Lack of street furniture

#### **4.2 Triangulation by pedestrians via questionnaire**

Previous works have indicated several main criteria determining the walkability of urban public spaces. For the purpose of this paper, only those criteria relating to safety, comfort, accessibility, and connectivity were discussed in the questionnaire. The questions in this survey were divided into five parts. Figure 5 shows the dependent and independent variables in the survey. According to this conceptual framework, five independent variables of demographics, comfort, safety, accessibility, and connectivity features (by Likert scale) were developed with each consisting of several item variables. Table 1 shows the descriptive analysis of the collected data. The questionnaire survey was distributed among pedestrians who come to the street for their own purposes. According to Ferguson and Cox (1993), 100 respondents are considered as a minimum number of respondents for taking part in a questionnaire. In addition the sample size based on De Vaus (1991) asserted that 100 samples are sufficient. So, one hundred participants were considered for this study. Moreover, SPSS software has been used to analyze the data in this study.

|  |                          |  |  |  |      |     |                          |                          |                          |   |   |   |   |  |
|--|--------------------------|--|--|--|------|-----|--------------------------|--------------------------|--------------------------|---|---|---|---|--|
| <b>0. Segment type</b><br>Low volume road <input type="checkbox"/> 1<br>High volume road <input checked="" type="checkbox"/> 2<br>Bike or Ped path - skip section C <input type="checkbox"/> 3   |                          | If no sidewalk, skip now to section C.<br><b>11. Curb cuts</b><br>None <input type="checkbox"/> 1<br>1 to 4 <input checked="" type="checkbox"/> 2<br>> 4 <input type="checkbox"/> 3  |  | <b>24. Bicycle facilities (all that apply)</b><br>Bicycle route signs <input type="checkbox"/> 1<br>Striped bicycle lane designation <input type="checkbox"/> 2<br>Visible bicycle parking facilities <input type="checkbox"/> 3<br>Bicycle crossing warning <input type="checkbox"/> 4<br>No bicycle facilities <input checked="" type="checkbox"/> 5 |      |     |                          |                          |                          |   |   |   |   |  |
| <b>A. Environment</b><br><b>1. Uses in Segment (all that apply)</b><br>Housing - Single Family Detached <input type="checkbox"/> 1<br>Housing - Multi-Family <input type="checkbox"/> 2<br>Housing - Mobile Homes <input type="checkbox"/> 3<br>Office/Institutional <input type="checkbox"/> 4<br>Restaurant/Café/Commercial <input checked="" type="checkbox"/> 5<br>Industrial <input type="checkbox"/> 6<br>Vacant/Undeveloped <input type="checkbox"/> 7<br>Recreation <input type="checkbox"/> 8 |                          | <b>12. Sidewalk completeness/continuity</b><br>Sidewalk is complete <input type="checkbox"/> 1<br>Sidewalk is incomplete <input checked="" type="checkbox"/> 2   |  | <b>D. Walking/Cycling Environment</b><br><b>25. Roadway/path lighting</b><br>Road-oriented lighting <input checked="" type="checkbox"/> 1<br>Pedestrian-scale lighting <input type="checkbox"/> 2<br>Other lighting <input type="checkbox"/> 3<br>No lighting <input type="checkbox"/> 4   |      |     |                          |                          |                          |   |   |   |   |  |
| <b>2. Slope</b><br>Flat <input checked="" type="checkbox"/> 1<br>Slight hill <input type="checkbox"/> 2<br>Steep hill <input type="checkbox"/> 3   |                          | <b>13. Sidewalk connectivity to other sidewalks/crosswalks</b><br>number of connections <u>3</u> 1   |  | <b>26. Amenities (all that apply)</b><br>Public garbage cans <input type="checkbox"/> 1<br>Benches <input type="checkbox"/> 2<br>Water fountain <input type="checkbox"/> 3<br>Street vendors/vending machines <input type="checkbox"/> 4<br>No amenities <input type="checkbox"/> 5  |      |     |                          |                          |                          |   |   |   |   |  |
| <b>3. Segment Intersections</b><br>Segment has 3 way intersection <input type="checkbox"/> 1<br>Segment has 4 way intersection <input checked="" type="checkbox"/> 2<br>Segment has other intersection <input type="checkbox"/> 3<br>Segment deadends but path continues <input type="checkbox"/> 4<br>Segment deadends <input type="checkbox"/> 5<br>Segment has no intersections <input type="checkbox"/> 6  |                          | <b>C. Road Attributes (skip if path only)</b><br><b>14. Condition of road</b><br>Poor (many bumps/cracks/holes) <input type="checkbox"/> 1<br>Fair (some bumps/cracks/holes) <input type="checkbox"/> 2<br>Good (very few bumps/cracks/holes) <input type="checkbox"/> 3<br>Under Repair <input type="checkbox"/> 4  |  | <b>27. Are there wayfinding aids?</b><br>No <input type="checkbox"/> 1<br>Yes <input checked="" type="checkbox"/> 2  |      |     |                          |                          |                          |   |   |   |   |  |
| <b>B. Pedestrian Facility (skip if none present)</b><br><b>4. Type(s) of pedestrian facility (all that apply)</b><br>Footpath (worn dirt path) <input type="checkbox"/> 1<br>Paved Trail <input type="checkbox"/> 2<br>Sidewalk <input checked="" type="checkbox"/> 3<br>Pedestrian Street (closed to cars) <input type="checkbox"/> 4   |                          | <b>15. Number of lanes</b><br>Minimum # of lanes to cross <u>1</u> 1<br>Maximum # of lanes to cross <u>2</u> 1   |  | <b>28. Number of trees shading walking area</b><br>None or Very Few <input type="checkbox"/> 1<br>Some <input type="checkbox"/> 2<br>Many/Dense <input type="checkbox"/> 3   |      |     |                          |                          |                          |   |   |   |   |  |
| The rest of the questions in section B refer to the best pedestrian facility selected above.<br><b>5. Path material (all that apply)</b><br>Asphalt <input type="checkbox"/> 1<br>Concrete <input checked="" type="checkbox"/> 2<br>Paving Bricks or Flat Stone <input type="checkbox"/> 3<br>Gravel <input type="checkbox"/> 4<br>Dirt or Sand <input type="checkbox"/> 5   |                          | <b>16. Posted speed limit</b><br>None posted <input type="checkbox"/> 1<br>(mph): <u>        </u> 1  |  | <b>29. Degree of enclosure</b><br>Little or no enclosure <input type="checkbox"/> 1<br>Some enclosure <input type="checkbox"/> 2<br>Highly enclosed <input type="checkbox"/> 3   |      |     |                          |                          |                          |   |   |   |   |  |
| <b>6. Path condition/maintenance</b><br>Poor (many bumps/cracks/holes) <input checked="" type="checkbox"/> 1<br>Fair (some bumps/cracks/holes) <input type="checkbox"/> 2<br>Good (very few bumps/cracks/holes) <input type="checkbox"/> 3<br>Under Repair <input type="checkbox"/> 4  |                          | <b>17. On-Street parking (if pavement is unmarked, check only if cars parked)</b><br>Parallel or Diagonal <input type="checkbox"/> 1<br>None <input checked="" type="checkbox"/> 2   |  | <b>30. Powerlines along segment?</b><br>Low Voltage/Distribution Line <input type="checkbox"/> 1<br>High Voltage/Transmission Line <input type="checkbox"/> 2<br>None <input checked="" type="checkbox"/> 3  |      |     |                          |                          |                          |   |   |   |   |  |
| <b>7. Path obstructions (all that apply)</b><br>Poles or Signs <input checked="" type="checkbox"/> 1<br>Parked Cars <input type="checkbox"/> 2<br>Greenery <input type="checkbox"/> 3<br>Garbage Cans <input type="checkbox"/> 4<br>Other <input type="checkbox"/> 5<br>None <input type="checkbox"/> 6  |                          | <b>18. Off-street parking lot spaces</b><br><table border="1"> <tr> <td>0-5</td> <td>6-25</td> <td>26+</td> </tr> <tr> <td><input type="checkbox"/></td> <td><input type="checkbox"/></td> <td><input type="checkbox"/></td> </tr> <tr> <td>1</td> <td>2</td> <td>3</td> </tr> </table>  |  | 0-5  | 6-25 | 26+ | <input type="checkbox"/> | <input type="checkbox"/> | <input type="checkbox"/> | 1 | 2 | 3 | <b>31. Overall cleanliness and building maintenance</b><br>Poor (much litter/graffiti/broken facilities) <input type="checkbox"/> 1<br>Fair (some litter/graffiti/broken facilities) <input type="checkbox"/> 2<br>Good (no litter/graffiti/broken facilities) <input type="checkbox"/> 3 |  |
| 0-5  | 6-25                     | 26+  |  |  |      |     |                          |                          |                          |   |   |   |   |  |
| <input type="checkbox"/>   | <input type="checkbox"/> | <input type="checkbox"/>   |  |  |      |     |                          |                          |                          |   |   |   |   |  |
| 1  | 2                        | 3  |  |  |      |     |                          |                          |                          |   |   |   |   |  |
| <b>8. Buffers between road and path (all that apply)</b><br>Fence <input type="checkbox"/> 1<br>Tress <input type="checkbox"/> 2<br>Hedges <input type="checkbox"/> 3<br>Landscape <input type="checkbox"/> 4<br>Grass <input type="checkbox"/> 5<br>None <input checked="" type="checkbox"/> 6  |                          | <b>19. Must you walk through a parking lot to get to most buildings?</b><br>Yes <input type="checkbox"/> 1<br>No <input checked="" type="checkbox"/> 2   |  | <b>32. Articulation in building designs</b><br>Little or no articulation <input type="checkbox"/> 1<br>Some articulation <input type="checkbox"/> 2<br>Highly articulated <input type="checkbox"/> 3   |      |     |                          |                          |                          |   |   |   |   |  |
| <b>9. Path Distance from Curb</b><br>At edge <input checked="" type="checkbox"/> 1<br>< 5 feet <input type="checkbox"/> 2<br>> 5 feet <input type="checkbox"/> 3   |                          | <b>20. Presence of med-hi volume driveways</b><br>< 2 <input type="checkbox"/> 1<br>2 to 4 <input checked="" type="checkbox"/> 2<br>> 4 <input type="checkbox"/> 3   |  | <b>33. Building setbacks from sidewalk</b><br>At edge of sidewalk <input checked="" type="checkbox"/> 1<br>Within 20 feet of sidewalk <input type="checkbox"/> 2<br>More than 20 feet from sidewalk <input type="checkbox"/> 3   |      |     |                          |                          |                          |   |   |   |   |  |
| <b>10. Sidewalk Width</b><br>< 4 feet <input type="checkbox"/> 1<br>Between 4 and 8 feet <input checked="" type="checkbox"/> 2<br>> 8 feet <input type="checkbox"/> 3  |                          | <b>21. Traffic control devices (all that apply)</b><br>Traffic light <input type="checkbox"/> 1<br>Stop sign <input type="checkbox"/> 2<br>Traffic circle <input type="checkbox"/> 3<br>Speed bumps <input type="checkbox"/> 4<br>Chicanes or chokers <input type="checkbox"/> 5<br>None <input checked="" type="checkbox"/> 6   |  | <b>34. Building height</b><br>Short <input type="checkbox"/> 1<br>Medium <input checked="" type="checkbox"/> 2<br>Tall <input type="checkbox"/> 3  |      |     |                          |                          |                          |   |   |   |   |  |
|  |                          | <b>22. Crosswalks</b><br>None <input type="checkbox"/> 1<br>1 to 2 <input type="checkbox"/> 2<br>3 to 4 <input checked="" type="checkbox"/> 3<br>> 4 <input type="checkbox"/> 4  |  | <b>35. Bus stops</b><br>Bus stop with shelter <input type="checkbox"/> 1<br>Bus stop with bench <input type="checkbox"/> 2<br>Bus stop with signage only <input type="checkbox"/> 3<br>No bus stop <input checked="" type="checkbox"/> 4   |      |     |                          |                          |                          |   |   |   |   |  |
|  |                          | <b>23. Crossing Aids (all that apply)</b><br>Yield to Ped Paddles <input type="checkbox"/> 1<br>Pedestrian Signal <input type="checkbox"/> 2<br>Median/Traffic Island <input type="checkbox"/> 3<br>Curb Extension <input type="checkbox"/> 4<br>Overpass/Underpass <input type="checkbox"/> 5<br>Pedestrian Crossing Warning Sign <input type="checkbox"/> 6<br>Flashing Warning Light <input type="checkbox"/> 7<br>Share the Road Warnign Sign <input type="checkbox"/> 8<br>None <input checked="" type="checkbox"/> 9 |  | <b>Subjective Assessment: Segment...</b><br>Enter 1,2,3, or 4 for 1=Strongly Agree 2= Agree, 3=Disagree, 4=Strongly Disagree<br>.....is attractive for walking. <u>3</u> 1<br>.....is attractive for cycling. <u>4</u> 1<br>.....feels safe for walking. <u>3</u> 1<br>.....feels safe for cycling. <u>4</u> 1   |      |     |                          |                          |                          |   |   |   |   |  |

Figure 4. PEDS audit tool for Mawlawi Street



**Figure 5.** Conceptual Framework

**Table 1.** Summary of the demographics, comfort, safety, accessibility and connectivity variables

| Variables            | Descriptives   | Mean |
|----------------------|--|------|
| Gender               | 1 male; 2 female   | 1.40 |
| Age                  | 10<1<19; 20<2<29; 30<3<39; 40<4<49; 50<5<59; 6 ≥ 60                                  | 2.79 |
| Transportation Type  | 1 bus; 2 private car; 3 taxi; 4 on foot; 5 bicycle; 6 others                         | 2.17 |
| Visiting Reason      | 1 working; 2 shopping; 3 meeting; 4 walking; 5 eating; 6 others                      | 2.50 |
| Visiting Number      | 1 every day; 2 once in a week; 3 twice in a week; 4 more than twice; 5 only weekends | 3.42 |
| Sidewalk Condition   | 1 very poor; 2 poor; 3 average; 4 good; 5 very good                                  | 2.68 |
| Street Furniture     | 1 very poor; 2 poor; 3 average; 4 good; 5 very good                                  | 2.12 |
| Tree, Vegetation     | 1 very poor; 2 poor; 3 average; 4 good; 5 very good                                  | 1.98 |
| Facade Condition     | 1 very poor; 2 poor; 3 average; 4 good; 5 very good                                  | 2.80 |
| Comfort Feeling      | 1 very poor; 2 poor; 3 average; 4 good; 5 very good                                  | 2.09 |
| Curb                 | 1 very poor; 2 poor; 3 average; 4 good; 5 very good                                  | 2.40 |
| Street Bump          | 1 very poor; 2 poor; 3 average; 4 good; 5 very good                                  | 2.20 |
| Traffic Sign         | 1 very poor; 2 poor; 3 average; 4 good; 5 very good                                  | 2.45 |
| Ease of Crossing     | 1 very poor; 2 poor; 3 average; 4 good; 5 very good                                  | 2.33 |
| Safety Feeling       | 1 very poor; 2 poor; 3 average; 4 good; 5 very good                                  | 2.42 |
| Sidewalk Obstruction | 1 very poor; 2 poor; 3 average; 4 good; 5 very good                                  | 2.57 |
| Curb Ramp            | 1 very poor; 2 poor; 3 average; 4 good; 5 very good                                  | 2.13 |
| Tactile Strip        | 1 very poor; 2 poor; 3 average; 4 good; 5 very good                                  | 2.14 |
| On-Street Parking    | 1 very poor; 2 poor; 3 average; 4 good; 5 very good                                  | 2.28 |
| Universal Design     | 1 very poor; 2 poor; 3 average; 4 good; 5 very good                                  | 2.34 |
| Sidewalk Continuity  | 1 very poor; 2 poor; 3 average; 4 good; 5 very good                                  | 2.52 |
| Wayfinding Signs     | 1 very poor; 2 poor; 3 average; 4 good; 5 very good                                  | 2.63 |
| Landmark             | 1 very poor; 2 poor; 3 average; 4 good; 5 very good                                  | 2.34 |
| Connectivity Status  | 1 very poor; 2 poor; 3 average; 4 good; 5 very good                                  | 2.89 |



#### 4.2.1 Analysis of questionnaire

For investigating the determinants of street walkability, a series of statistical methods can be applied. First of all, reliability analysis via Cronbach's alpha may be conducted in the research. This variable, that is the most common technique of testing reliability was 0.941, as it was more than 0.9, it showed the result was excellently acceptable. Afterwards, the KMO (Kaiser-Meyer-Olkin) measure and Bartlett's test was performed to specify the sample adequacy. Since the KMO value was 0.935 which is more than 0.5, so it has an acceptable value to go forward the factor analysis (Mousavi et al., 2013). Lastly, exploratory factor analysis and correlation analysis were served to detect different relationships.

#### 4.2.2 Exploratory factor analysis

Firstly, basic item analysis with Varimax rotation was conducted to test whether variables regarding street walkability could be categorized into a smaller number of factors. In this case, item variables with factor loading less than 0.40 were removed from the groups (Mousavi and Khan, 2013). 19 questionnaire items were categorized into 2 components. Component 1 had ten items regarding comfort and safety issues, while component 2 had nine items regarding accessibility and connectivity issues. However, all of reliability loading were more than 0.6 that represented adequate reliability (Table 2).

**Table 2.** Exploratory factor analysis

| Items                | Component |      |
|----------------------|-----------|------|
|                      | 1         | 2    |
| Sidewalk Condition   | .823      |      |
| Street Furniture     | .796      |      |
| Tree, Vegetation     | .791      |      |
| Facade Condition     | .806      |      |
| Comfort Feeling      | .804      |      |
| Curb                 | .853      |      |
| Street Bump          | .889      |      |
| Traffic Sign         | .784      |      |
| Ease of Crossing     | .817      |      |
| Safety Feeling       | .818      |      |
| Sidewalk Obstruction |           | .662 |
| Curb Ramp            |           | .749 |
| Tactile Strip        |           | .783 |
| On-Street Parking    |           | .679 |
| Universal Design     |           | .782 |
| Sidewalk Continuity  |           | .780 |
| Wayfinding Signs     |           | .877 |
| Landmark             |           | .857 |
| Connectivity Status  |           | .871 |

#### 4.2.3. Correlation analysis of affordability price & knowledge

Correlation analysis was carried out to test the intensity of relation among four main features of walkability (comfort, safety, accessibility, and connectivity). Table 3 illustrates the correlation matrix of those items. It revealed that all walkability-related items were positively and significantly correlated to each other at the significance level of 0.01. However, comfort and safety were more correlated to each other in comparison to the rest, meanwhile accessibility and connectivity items were mostly correlated to each other compared with the others.

**Table 3.** Correlations

|                      | <b>Comfort</b> | <b>Safety</b> | <b>Accessibility</b> | <b>Connectivity</b> |
|----------------------|----------------|---------------|----------------------|---------------------|
| <b>Comfort</b>       | 1              | .820**        | .721**               | .584**              |
| <b>Safety</b>        | .820**         | 1             | .734**               | .638**              |
| <b>Accessibility</b> | .721**         | .734**        | 1                    | .785**              |
| <b>Connectivity</b>  | .584**         | .638**        | .785**               | 1                   |

\*\* .Correlation is significant at the 0.01 level (2-tailed).

#### 4.2.3. Demographic and walkability features

The number of males was more than females, most of respondents were between 20 and 40 years old. The study showed that age was not a basic variable of street walkability. Most of the respondents came to the site with their private cars or taxi (60%) while the minority of them came on foot, this may be a strong reason that street cannot persuade people to come there on foot. Besides, the street was not inviting for walking. Whereas, most of the people (70%) visited the site for shopping, a few percentage showed a tendency for walking in such a main street of Sulaymaniyah. According to descriptive statistics, although all the figures of items related to street walkability were between ‘Poor’ and ‘average’, participants were mostly partial to choose poor status rather than neutral choice. Among all, comfort issue had the lowest mean score (2.09) than the other three features of walkability. Whereas, for safety and accessibility the mean scores were 2.42 and 2.34 respectively. Although, connectivity got the highest mean score (2.89) compared to others, participants had an extremely average choice. Finally, it can be concluded that participants declared the poor status of physical elements of street in terms of walkability.

#### 4.3 Validations by local people

An interview included open-ended questions was conducted with seven local people who work and live on Mawlawi Street. They were asked questions about the strength, opportunity, weakness and threat of this street on the basis of those four items based on audit tools table below are the summary of these interviews. Table 4 shows those four items related to the environment. Moreover, most of interviewees just declared some weaknesses regarding ‘pedestrian facilities’ including; unpleasant sidewalk materials, poor condition of the sidewalk in some places, narrow sidewalk, existing of path obstruction such as bollards in sidewalk, lack of buffer between pedestrians and vehicles, and lack of ramps and curb cuts on the corner of sidewalks especially for disabled pedestrians.

**Table 4.** Issues related to ‘Environment’

|                    |  |
|--------------------|--|
| <b>Strength</b>    | <ul style="list-style-type: none"> <li>Existing of various activities</li> <li>The main road is flat.</li> </ul>   |
| <b>Weakness</b>    | <ul style="list-style-type: none"> <li>Street vendors make barriers resulted in traffic for both pedestrians and vehicles</li> <li>Different levels between front side and back side of the road</li> <li>Poor condition of building.</li> </ul> |
| <b>Opportunity</b> | <ul style="list-style-type: none"> <li>The street located in the city center.</li> </ul>   |
| <b>Threats</b>     | <ul style="list-style-type: none"> <li>Some activities like chicken sellers made the area dirty.</li> </ul>  |

Table 5 demonstrates the ideas of most of interviewees concerning road attributes. Finally, the SWOT analysis of respondents about status of walking environment is shown in table 6.

**Table 5.** Issues related to ‘Road attributes’

|                    |  |
|--------------------|--|
| <b>Strength</b>    | <ul style="list-style-type: none"> <li>• The maximum allowed speeds is 30 km/hour.</li> </ul>  |
| <b>Weakness</b>    | <ul style="list-style-type: none"> <li>• Poor condition of roads in some spots</li> <li>• Lack of on-street parking</li> <li>• Invisible crosswalks</li> <li>• Lack of traffic control at the intersection and crosswalks</li> <li>• High traffic volume</li> <li>• Conflict between pedestrian and vehicles</li> <li>• Lack of maintenance</li> </ul> |
| <b>Opportunity</b> | <ul style="list-style-type: none"> <li>• Named as the main road of city center.</li> </ul>   |
| <b>Threats</b>     | NA   |

**Table 6.** Issues related to ‘Walking environment’

|                    |  |
|--------------------|--|
| <b>Strength</b>    | <ul style="list-style-type: none"> <li>• Combination of historical buildings and modern buildings.</li> </ul>  |
| <b>Weakness</b>    | <ul style="list-style-type: none"> <li>• Lack of proper lighting</li> <li>• Lack of maintenance of lighting</li> <li>• Lack of sufficient urban amenities such as public toilets, beaches, and litter bins</li> <li>• Lack of sufficient and mature trees</li> <li>• Lack of landscape maintenance</li> <li>• Lack of Way finding signs and Directional Maps</li> <li>• Lack of shelters and benches in the bus stop</li> <li>• Lack of cover linkages</li> <li>• Lack of Building Setbacks from Sidewalk</li> <li>• Unattractive appearance like electricity wire, chicken shops</li> </ul> |
| <b>Opportunity</b> | <ul style="list-style-type: none"> <li>• Historical location</li> </ul>  |
| <b>Threats</b>     | <ul style="list-style-type: none"> <li>• Wet market</li> </ul>   |

## 5. Potential proposal for redevelopment

At this stage the proposals to enhance walkability can be directly based on those four factors. As the walkability level in Mawlawi Street was low, so the following recommendations can improve walkability through proper design of physical elements:

Enhancement of the pedestrian environment by widening sidewalks for multiple site furnishing configurations and narrowing the road width. Benches should be located under the trees to take benefit of shading and also to be out of the way of the pedestrian passageway. Benches, bollards and planting more trees along the sidewalks can also made buffer between the sidewalks and road. Providing landscape elements and public toilets in the park. Providing awning in front of shops to protect pedestrians from the intense sunshine and raining. In order to increase pedestrian safety and enhance the quality of the pedestrian environment, it was recommended that cross lines should be raised and visible in the crosswalk area with different materials from the road. Applying curb cuts and ramps in the corners and intersections. Providing street lighting to make the street safer at nights. Supplying traffic lights, signs and traffic control devices at the intersection. Designing bus stops and shelters. In order to create a more accessible street for disabled, elderly, and women with strollers, it was recommended that fixed bollards on the sidewalks should be removed to create a consistent, unobstructed pedestrian path. The vegetation and water feature along the street should be provided. Some activities on the street like chicken shops should be removed. The street vendors should be arranged on the sidewalks to enhance vibrancy of the site. Figure 6 shows the master plan of the street with above-mentioned recommendations.



Figure 5. Master plan

## 6. Conclusions and recommendations

Based on triangulation method included a questionnaire with pedestrians, interview with local people and direct observation by PEDs audit tool, the upcoming results were acquired that can influence the level of walkability in Mawlawi Street: inadequate and poor qualities of sidewalk's infrastructures; lack of street amenities; inadequate or poor qualities of the street's infrastructures. Finally, it can be concluded that the street was not comfortable and safe for walking. Besides, the street was not accessible for disabled people and crossing of the street was not easy. The results of this study showed that there was a strong relationship between the physical elements of street and walkability concept. The results showed that the level of walkability in Mawlawi Street was in low level due to the poor qualities of the sidewalk infrastructures, poor quality of the street furniture's amenities and poor quality of the street infrastructures. Thus, the provision and design of the physical elements have a significant role to improve walkability in the street. Finally, Mawlawi Street can be more walkable through designing physical elements, if done properly. This study focused on the relation of the physical elements of the street and walkability, while land use as the other aspect can play a major role to promote walkability.

## Acknowledgements

The authors sincerely acknowledge Research Management Center (RMC) of Universiti Teknologi Malaysia (UTM), and Ministry of Higher Education (MOHE) of the Government of Malaysia.

## References

- AZMI, D. I. & KARIM, H. A. 2012. Implications of walkability towards promoting sustainable urban neighbourhood. *Procedia-Social and Behavioral Sciences*, 50, 204-213.
- BROWN, B. B., WERNER, C. M., AMBURGEY, J. W. & SZALAY, C. 2007. Walkable Route Perceptions and Physical Features Converging Evidence for En Route Walking Experiences. *Environment and behavior*, 39, 34-61.
- DAISA, J. M. 2010. *Designing Walkable Urban Thoroughfares: A Context Sensitive Approach*, Institute of Transportation Engineers.
- FORSYTH, A., HEARST, M., OAKES, J. M. & SCHMITZ, K. H. 2008. Design and destinations: factors influencing walking and total physical activity. *Urban Studies*, 45, 1973-1996.
- FRANK, L., ENGELKE, P. & SCHMID, T. 2003. *Health and community design: The impact of the built environment on physical activity*, Island Press.
- FRUIN, J. J. 1971. *Pedestrian planning and design*.
- GEHL, J. 2010. *Cities for people*, Island Press.

- GILES-CORTI, B., KELTY, S. F., ZUBRICK, S. R. & VILLANUEVA, K. P. 2009. Encouraging walking for transport and physical activity in children and adolescents. *Sports medicine*, 39, 995-1009.
- HANDY, S. L., BOARNET, M. G., EWING, R. & KILLINGSWORTH, R. E. 2002. How the built environment affects physical activity: views from urban planning. *American journal of preventive medicine*, 23, 64-73.
- JACKSON, G. 2009. Denver's First Pedestrian Priority Zone.
- JACOBS, A. B. 1993. Making great streets. *Great Streets*, 269-292.
- JACOBS, J. 1961. *The death and life of great American cities*, Random House LLC.
- KOSTOF, S. 1992. *The city assembled*, London.
- LAPLANTE, J. & MCCANN, B. 2008. Complete streets: We can get there from here. *ITE journal*, 78, 24.
- LITMAN, T. A. 2003. Economic value of walkability. *Transportation Research Record: Journal of the Transportation Research Board*, 1828, 3-11.
- LO, R. H. 2009. Walkability: what is it? *Journal of Urbanism*, 2, 145-166.
- MCNALLY, K. 2010. Design Guidelines for Walkable Communities. *Ohio, United State: Niehoff Studio*.
- MOUGHTIN, C. 2003. *Urban design: street and square*, Routledge.
- MOUSAVI, S. M. & KHAN, T. H. 2013. *Adding Affordability to Sustainability: A study of Environmentally Sustainable Design Elements in Housing in Malaysia, Germany*, LAP (Lambert Academic Publishing).
- MOUSAVI, S. M., KHAN, T. H. & JAVIDI, B. 2013. Environmentally Sustainable Affordable Design Elements in Housing in the context of Malaysia: Focus on Middle income group. *Life Science Journal*, 10.
- NAKAZAWA, A. 2011. Walkability of Three Downtown Vancouver Streets: Evaluating the Physical and Perceptual Qualities of the Built Environment.
- RYKWERT, J. 1986. The street: The use of its history. *On streets*, 14-27.
- SAELENS, B. E. & HANDY, S. L. 2008. Built environment correlates of walking: a review. *Medicine and science in sports and exercise*, 40, S550.
- SOUTHWORTH, M. 2005. Designing the walkable city. *Journal of urban planning and development*, 131, 246-257.
- SOUTHWORTH, M. & BEN-JOSEPH, E. 2003. *Streets and the Shaping of Towns and Cities*, Island Press.
- WALL, E. & WATERMAN, T. 2010. *Basics Landscape Architecture 01: Urban Design*, AVA Publishing.
- WEY, W.-M. & CHIU, Y.-H. 2013. Assessing the walkability of pedestrian environment under the transit-oriented development. *Habitat International*, 38, 106-118.
- WHYTE, W. H. 2012. *City: Rediscovering the center*, University of Pennsylvania Press.